

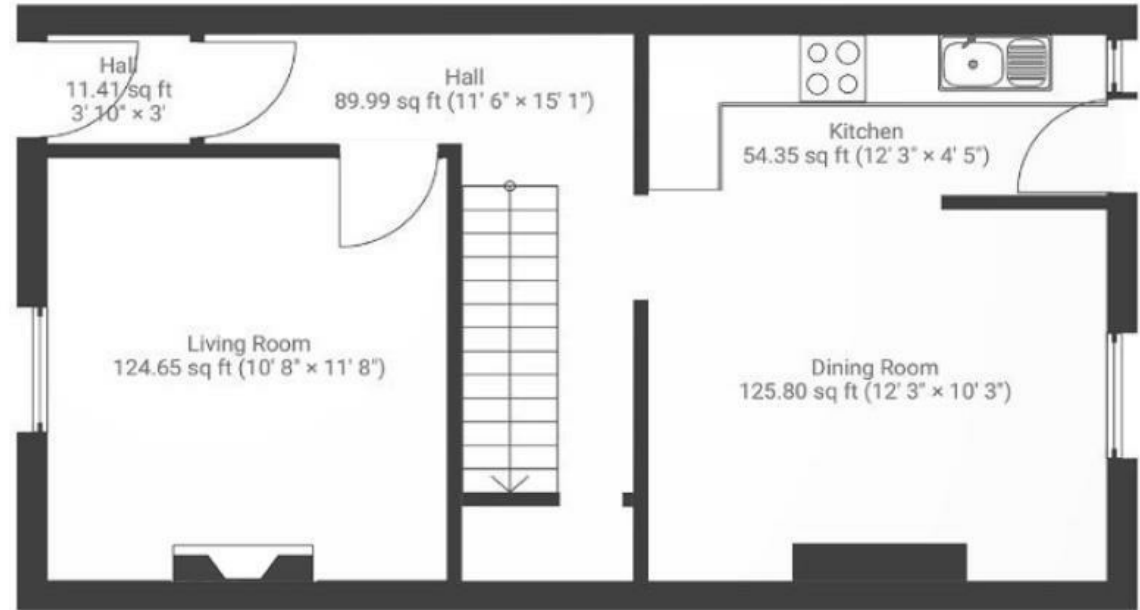
# Southey Street

ST WERBURGHS

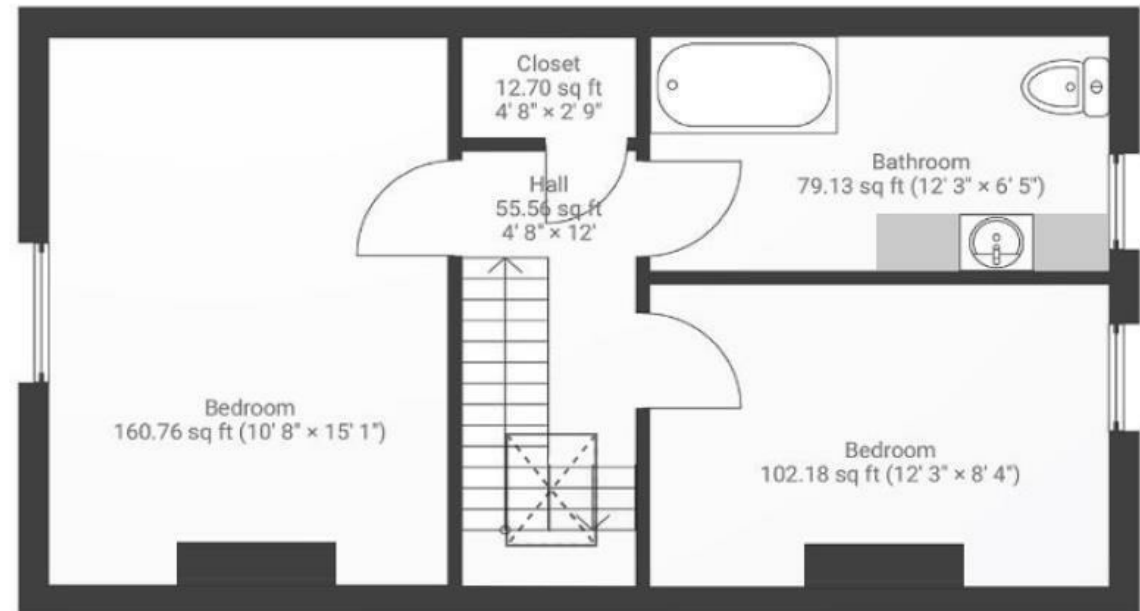
APPROXIMATE FLOOR AREA  
76 SQM / 816 SQFT



## GROUND FLOOR



## FIRST FLOOR



Illustrations are for reference purposes only, measurements are approximate, not to scale.

Boardwalk

# Southey Street , BRISTOL

£

£400,000

ZZZ

2 Bedrooms



BS2 9RE



1 Bathrooms

*"I was looking for a quiet cosy house, but still close to the action, and this one ticked all the boxes. There are so many great pubs, cafes and restaurants within walking distance; Bianchis on Picton St is a particular favourite. There are many green spaces nearby, but the garden is a lovely peaceful space to relax and dine alfresco on the raised decking."*

